

# Unitarian Universalist Fellowship Of Mill Creek

Hockessin, Delaware

## PROJECT PROFILE



The facility for the Unitarian Universalist Fellowship of Mill Creek contains about 8,000 SF of a worship / multipurpose space, a lobby with adjacent meeting rooms, administrative offices, classrooms and a semi-commercial kitchen. The classroom area is designed to function for both religious education and as a daily preschool. This congregation felt that a building which exhibits a strong, symbolic and functional relationship with the natural environment would best express what is sacred to them. In response to this desire, we used solar orientation as a primary element in this scheme, aligning the building axes with the cardinal points of the compass. The south face of the building is designed with glazing and overhangs which will allow light and heat to penetrate the building, but will control the amount of light and glare. This south side opens to landscaped terraces which provide a direct relationship to the outside for both the worship area and the classrooms.

### Client:

Unitarian Universalist  
Society of Mill Creek  
579 Polly Drummond Hill  
Rd, Pike Creek Valley  
Newark, DE 19711

### Project Type:

New Church

### Location:

Hockessin, Delaware

### Size:

8,000 SF

### Status:

Completed 2003

### Role:

#### Full A/E Services:

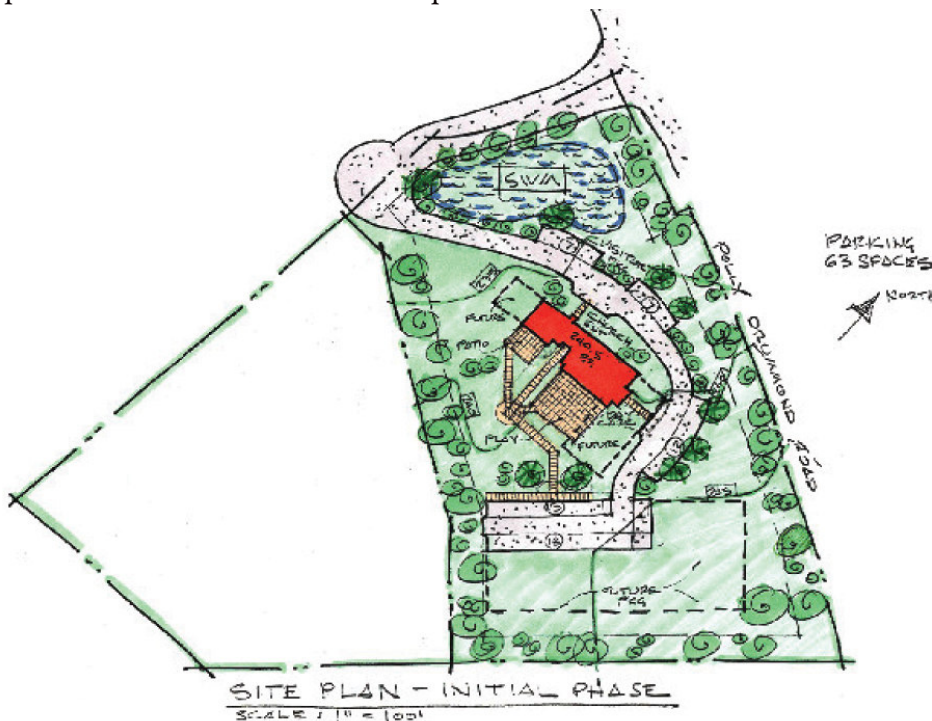
- Site Evaluation
- Master Planning
- Construction Cost Projections
- Design
- Construction Documents
- Bidding/Negotiations
- Construction Administration

### Cost:

\$ 1,066,000 Construction  
\$ 73,375 Design

### Reference:

Clem Bowen,  
Unitarian Universalist  
Society of Mill Creek  
302.656.6115



Edmeades & Stromdahl, Ltd.  
ARCHITECTS • PLANNERS

11 North Main Street • Bel Air MD 21014 • P 410.879.0388 • F 410.879.4785 • www.eslarch.com

